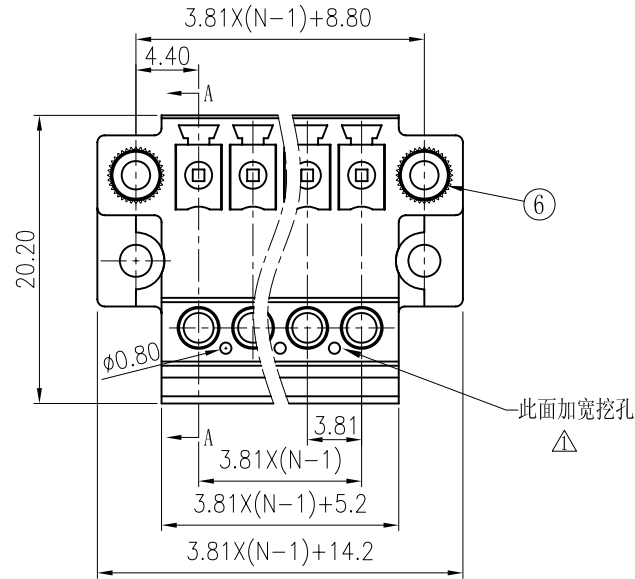


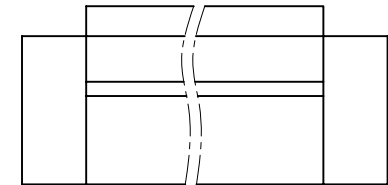
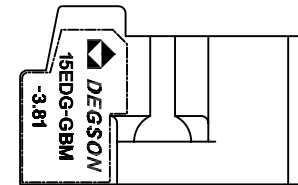
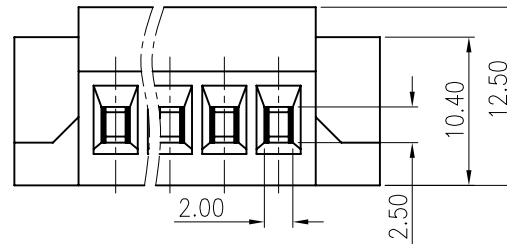
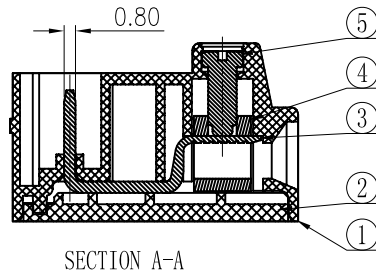
REVISION RECORD				
REV	ECO	DESCRIPTION	DRFT	DATE
10-0257		修改外观	Jinbai.Lan	08/13/10



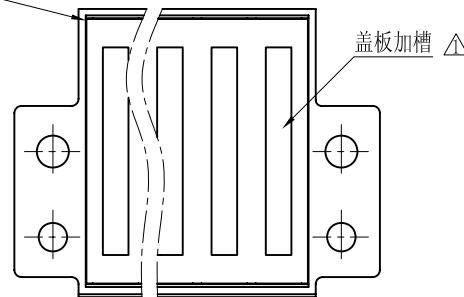
Notes:

- pitch:3.81mm poles:2-16p
- Rated voltage/current:UL1059 300V/8A
IEC 250V/7A
- Insulation Resistance:5000M Ω /DC1000V
- Withstanding voltage: AC2000V/1Min
- Wire range:30-14AWG 0.2-1.5mm²
- Temp. Range:-40 $^{\circ}$ C~+105 $^{\circ}$ C
- Max. Torque Value :2.04kgf.cm
- Undimensioned Tolerances:

Pitch range in mm			Nominal dimension range in mm				
to 6	over 6 to 10	over 10 to 24	to 30	over 30 to 60	over 60 to 100	over 100 to 150	—
± 0.10	± 0.15	± 0.25	± 0.2	± 0.3	± 0.5	± 0.7	± 1.0



cover and housing contact by sonic welding



ITEM	NAME OF PART	NO. OF PART	Q'TY	MATERIAL	NOTES
6	2EDGVM Screws	S000000040 (H)	2	Brass	Cr ³⁺ Zn
5	15EDG—"Screws	S000001360 (H)	XX	Steel	
4	15EDG Brass Cage	X000000010 (H)	XX	Brass	Ni plated
3	15EDG-GBM-3.81 Pin	1178B00010 (H)	XX	Copper	Snce plated
2	15EDG-GBM-3.81 Cover	1178C0YXXA (H)	1	PA66	UL94V-0
1	15EDG-GBM-3.81 Housing	1178A0YXXA (H)	1	PA66	UL94V-0

MM (INCH)		DFTO Zhwrm	DATE 10/04/'08
TOLERANCES EXCEPT AS NOTED		CHKD	DATE
		MFO	DATE
		APPVL	DATE
MATERIAL :		G.E :	
FINISH :		DRAWING NO. 15EDG-GBM-3.81-E01	
SCALE :		/PART NO.	
DO NOT SCALE DRAWING		SHEET 1 OF 1	



NAME
15EDG-GBM-3.81-XXP-1Y-00A (H)

SIZE REV T1
A3 08/13/10